

300mmシリコンウエハー

300mm Silicon Wafers

300mm Silicon Wafers from SEH

W/W 300mm silicon wafer market is expected to record another strong year in 2006 with 55% growth as compared to the last year. With every quarter being a new record, the total monthly shipment volume of 300mm silicon wafers surpassed 1.7 million slices as of the end of 3Q, 2006. About 65% of the demand is from memory companies, with DRAM and NAND Flash as the major products, and they continue to be aggressive in their investment, mainly in Asia, for further expansion. A new production plant after another is ramping up throughout the year, and some of their latest production line is as big as >100kp/month of capacity. In the US and European regions, logic devices such as MPU and DSP are being manufactured more than memory products, and they steadily growing as well. From Technological aspect, 90nm processes are in volume production at many IC companies now and 65nm processes are in ramp-up phase while 45nm pilot production are already underway.

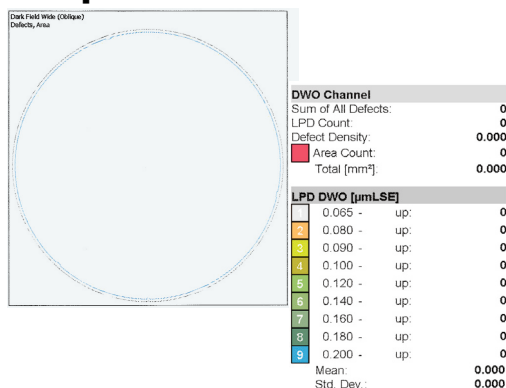
To meet such dynamic and diversified needs and various requirements from our customers, SEH supports our 300mm customers by having 4 manufacturing plants in Japan and a fully-integrated plant in the USA to assure our stable supply while continuing our activities for the quality improvement and new technology development for the next generation.

Wafer Line Up / Performance

Wafer Line Up		Epitaxial				Annealed	Polished			SOI
		P/P-	P/P+	P/P+CVD	EP-NANA	IG-NANA	Std.	LDC	NPC	
COP BMD Oxide	Top View									
	Sectional View									
<i>Performance</i>										
Near Surface Integrity	GOI	Excellent	Excellent	Excellent	Excellent	Excellent	Fair	Good	Excellent	Excellent
	COP	Excellent	Excellent	Excellent	Excellent	Excellent	Fair	Good	Excellent	Excellent
	Defect Free Depth (um)	Excellent	Excellent	Excellent	Excellent	Excellent	Fair	Fair	Excellent	Excellent
BMD Ability		Fair	Good	Good	Excellent	Excellent	Good	Good	Fair	N/A
Status		Production	Production	Production	Production	Production	Production	Production	Production	Production

LPD Level of 300mm Prime Wafer

Epitaxial



Nearly Perfect Crystal

